

**ITEM 5. ITEM FOR COMMITTEE INFORMATION – PARKING – CASTLEREAGH
STREET BETWEEN LIVERPOOL AND HUNTER STREETS SYDNEY**

TRIM RECORD NO: 2016/123095

RECOMMENDATION

It is recommended that the Committee note the following reallocation of parking:

- (A) Western side of Castlereagh Street, between the points 18 metres and 36.5 metres, south of King Street as "No Stopping";
- (B) Western side of Castlereagh Street, between the points 36.5 metres and 52 metres, south of King Street as "No Parking";
- (C) Western side of Castlereagh Street, between the points 52 metres and 80.5 metres, south of King Street as "No Stopping";
- (D) Western side of Castlereagh Street, between the points 80.5 metres and 96.1 metres, south of King Street as "No Parking";
- (E) Western side of Castlereagh Street, between the points 96.1 metres and 134.8 metres, south of King Street as "No Stopping";
- (F) Western side of Castlereagh Street, between the points 134.8 metres and 152.8 metres, south of King Street as "Loading Zone Ticket 6am-3pm Mon-Fri 6am-10am Sat", "No Stopping 3pm-8pm Mon-Fri" and "Taxi Zone Other Times";
- (G) Eastern side of Castlereagh Street, between the points 7 metres and 50.5 metres, south of King Street as "Bus Lane 6am-8pm Mon-Fri 10am-6pm Sat, Sun & Public Holidays" and "Taxi Zone Other Times";
- (H) Eastern side of Castlereagh Street, between the point 50.5 metres and Market Street, south of King Street as "Bus Lane 6am-8pm Mon-Fri 10am-6pm Sat, Sun & Public Holidays" and "No Stopping";
- (I) Western side of Castlereagh Street, between the points 9.9 metres and 43.3 metres, south of Market Street as "Truck Zone Ticket 6am-10am Mon-Fri", "Loading Zone Ticket 10am-6pm Mon-Fri 6am-10am Sat" and "4P Ticket 6pm-12am Mon-Fri 10am-10pm Sat, 8am-10pm Sun & Public Holidays";
- (J) Western side of Castlereagh Street, between the points 72.2 metres and 94.9 metres, south of Market Street as "Loading Zone Ticket 6am-6pm Mon-Fri, 6am-10am Sat" and "4P Ticket 6pm-12am Mon-Fri 10am-10pm Sat 8am-10pm Sun & Public Holidays";
- (K) Western side of Castlereagh Street, between the points 111.7 metres and 154.8 metres, south of Market Street as "Loading Zone Ticket 6am-6pm Mon-Fri 6am-10am Sat" and "4P Ticket 6pm-12am Mon-Fri 10am-10pm Sat 8am-10pm Sun & Public Holidays";
- (L) Western side of Castlereagh Street, between the points 154.8 metres and 193.7 metres, south of Market Street as "Loading Zone Ticket 6am-3pm Mon-Fri 6am-10am Sat", "4P Ticket 8pm-12am Mon-Fri 10am-10pm Sat 8am-10pm Sun & Public Holidays" and "No Stopping 3pm-8pm Mon-Fri";

- (M) Western side of Castlereagh Street, between the points 193.7 metres and 216 metres, south of Market Street as "No Parking";
- (N) Western side of Castlereagh Street, between the points 216 metres and 226.4 metres, south of Market Street as "Mail Zone";
- (O) Western side of Castlereagh Street, between the point 226.4 metres and Park Street, south of Market Street as "No Stopping";
- (P) Eastern side of Castlereagh Street, between Market Street and the point 23.8 metres, south of Market Street as "No Stopping";
- (Q) Eastern side of Castlereagh Street, between the points 23.8 metres and 111.4 metres, south of Market Street as "Bus Zone";
- (R) Eastern side of Castlereagh Street, between the points 111.4 metres and 123.5 metres, south of Market Street as "No Stopping";
- (S) Eastern side of Castlereagh Street, between the points 123.5 metres and 142.9 metres, south of Market Street as "No Stopping 3pm-8pm Mon-Fri" and "No Parking Other Times Buses Excepted 15 Minute Limit";
- (T) Eastern side of Castlereagh Street, between the points 142.9 metres and 161.4 metres, south of Market Street as "Loading Zone Ticket 6am-3pm Mon-Fri, 6am-10am Sat", "No Stopping 3pm-8pm Mon-Fri" and "4P Ticket 8pm-12am Mon-Fri 10am-10pm Sat 8am-10pm Sun & Public Holidays";
- (U) Eastern side of Castlereagh Street, between the points 161.4 metres and 167.6 metres, south of Market Street as "No Stopping";
- (V) Eastern side of Castlereagh Street, between the points 167.6 metres and 184.4 metres, south of Market Street as "No Stopping 6am-10am 3pm-8pm Mon-Fri", "Loading Zone Ticket 10am-3pm Mon-Fri 6am-10am Sat" and "4P Ticket 8pm-12am Mon-Fri 10am-10pm Sat 8am-10pm Sun & Public Holidays";
- (W) Eastern side of Castlereagh Street, between the points 184.4 metres and 202.2 metres, south of Market Street as "No Stopping";
- (X) Eastern side of Castlereagh Street, between the points 202.2 metres and 221.8 metres, south of Market Street as "No Stopping 6am-10am 3pm-8pm Mon-Fri" and "1/4P 10am-3pm 8pm-10pm Mon-Fri 6am-10pm Sat 8am-10pm Sun & Public Holidays";
- (Y) Eastern side of Castlereagh Street, between the point 2218 metres and Park Street, south of Market Street as "No Stopping";
- (Z) Western side of Castlereagh Street, between the points 8.7 metres and 19.6 metres, south of Park Street as "Loading Zone Ticket 6am-6pm Mon-Fri 6am-10am Sat" and "4P Ticket 6pm-12am Mon-Fri 10am-10pm Sat 8am-10pm Sun & Public Holidays";
- (AA) Western side of Castlereagh Street, between the points 75.2 metres and 109.0 metres, south of Park Street as "Loading Zone Ticket 6am-6pm Mon-Fri 6am-10am Sat" and "Taxi Zone Other Times";
- (BB) Eastern side of Castlereagh Street, between Park Street and the point 30.9 metres, south of Park Street as "No Stopping";

- (CC) Eastern side of Castlereagh Street, between the points 30.9 metres and 91.4 metres, south of Park Street as "Bus Zone";
- (DD) Eastern side of Castlereagh Street, between the point 91.4 metres and Bathurst Street, south of Park Street as "No Stopping";
- (EE) Western side of Castlereagh Street, between the points 93.3 metres and 111.5 metres, south of Bathurst Street as "No Stopping 6am-10am 3pm-8pm Mon-Fri", "Loading Zone 10am-3pm Mon-Fri 6am-10am Sat" and "4P Ticket 8pm-12am Mon-Fri 10am-10pm Sat 8am-10pm Sun & Public Holidays";
- (FF) Western side of Castlereagh Street, between the points 111.5 metres and 118.6 metres, south of Bathurst Street as "No Stopping";
- (GG) Western side of Castlereagh Street, between the points 118.6 metres and 133.9 metres, south of Bathurst Street as "No Stopping 6am-10am 3pm-8pm Mon-Fri", "Loading Zone 10am-3pm Mon-Fri 6am-10am Sat" and "4P Ticket 8pm-12am Mon-Fri 10am-10pm Sat 8am-10pm Sun & Public Holidays";
- (HH) Western side of Castlereagh Street, between the points 133.9 metres and 144.6 metres, south of Bathurst Street as "No Stopping";
- (II) Western side of Castlereagh Street, between the points 144.6 metres and 154.3 metres, south of Bathurst Street as "No Stopping 6am-10am 3pm-8pm Mon-Fri", "Loading Zone 10am-3pm Mon-Fri 6am-10am Sat" and "4P Ticket 8pm-12am Mon-Fri 10am-10pm Sat 8am-10pm Sun & Public Holidays";
- (JJ) Western side of Castlereagh Street, between the points 154.3 metres and 165.5 metres, south of Bathurst Street as "No Stopping";
- (KK) Western side of Castlereagh Street, between the points 165.5 metres and 178.2 metres, south of Bathurst Street as "No Stopping 6am-10am 3pm-8pm Mon-Fri", "Loading Zone 10am-3pm Mon-Fri 6am-10am Sat" and "4P Ticket 8pm-12am Mon-Fri 10am-10pm Sat 8am-10pm Sun & Public Holidays";
- (LL) Western side of Castlereagh Street, between the points 178.2 metres and 185.5 metres, south of Bathurst Street as "No Stopping";
- (MM) Western side of Castlereagh Street, between the points 185.5 metres and 197.1 metres, south of Bathurst Street as "No Parking 10am-3pm" and "No Stopping Other Times";
- (NN) Western side of Castlereagh Street, between the point 197.1 metres and Liverpool Street, south of Bathurst Street as "No Stopping";
- (OO) Eastern side of Castlereagh Street, between Bathurst Street and the point 58.6 metres, south of Bathurst Street as "No Stopping";
- (PP) Eastern side of Castlereagh Street, between the points 58.6 metres and 84.1 metres, south of Bathurst Street as "No Parking Fire Brigade Vehicles Excepted";
- (QQ) Eastern side of Castlereagh Street, between the points 84.1 metres and 97.8 metres, south of Bathurst Street as "No Stopping";

- (RR) Eastern side of Castlereagh Street, between the points 97.8 metres and 157.4 metres, south of Bathurst Street as "Loading Zone Ticket 6am-6pm Mon-Fri 6am-10am Sat" and "4P Ticket 6pm-12am Mon-Fri 10am-10pm Sat 8am-10pm Sun & Public Holidays";
- (SS) Eastern side of Castlereagh Street, between the points 157.4 metres and 181.4 metres, south of Bathurst Street as "No Parking Transport for NSW Emergency Vehicles Excepted";
- (TT) Eastern side of Castlereagh Street, between the points 204.3 metres and 216.7 metres, south of Bathurst Street as "Loading Zone Ticket 6am-6pm Mon-Fri 6am-10am Sat" and "4P Ticket 10am-6pm Sat 8am-6pm Sun & Public Holidays" and "Taxi Zone Other Times"; and
- (UU) The City, in conjunction with TfNSW, to review the provision of parking in Castlereagh Street, between King and Liverpool Streets, six months after implementation.

DECISION

BACKGROUND

On 19 December 2013, the NSW Government adopted the Sydney City Centre Access Strategy (Access Strategy). The Access Strategy will deliver a fully integrated transport network in Sydney's City Centre that puts the customer first and meets the growing transport task. It will mean more people use public transport to access the City Centre and it will change the way people move around within it.

The Access Strategy considers all transport modes and demonstrates how light rail, buses, trains, ferries, cars, taxis, pedestrians and cyclists will interact in the heart of Sydney. The Access Strategy also provides a clear direction for how all the different transport modes will work together in the Sydney CBD to reduce congestion, provide for future growth and improve the customer experience.

The Sydney City Centre Bus Plan (SCCBP) forms part of a suite of transport improvements associated with the Access Strategy and includes:

- New dedicated Bus Lanes, Bus Stops and shelters;
- Modifying kerbs and footpaths, line markings and medians; and
- Removing and relocating some taxi ranks, Loading Zones and on-street parking spaces.

The SCCBP aims to:

- Provide a more efficient bus network that is easier for customers to use and understand;
- Create bus corridors within the CBD that improve links to key destinations and improve connectivity with other transport modes; and
- Relocate existing bus routes on George Street to enable delivery of the CBD Light Rail.

The SCCBP will be delivered by Roads and Maritime Services (RMS), in conjunction with Transport for New South Wales (TfNSW) and the City of Sydney.

COMMENTS

The kerb space on the western side of Castlereagh Street between King and Liverpool Streets is generally signposted as "No Parking Fire Brigade Vehicles Excepted", "4P Ticket 6:30pm-

10:30pm Mon-Fri 10am-10pm Sat 8am-10pm Sun & Public Holidays" and "Loading Zone Ticket 7am-6pm Mon-Fri 7am-10pm Sat".

The kerb space on the eastern side of Castlereagh Street between King and Liverpool Streets is generally signposted as "No Parking 3.30pm-6.30pm Mon-Fri", "Taxi Zone Other Times", "4P Ticket" and "Loading Zone Ticket 7am-6pm Mon-Fri 7am-10pm Sat".

Where possible, loading, taxi and parking for people with disabilities will be distributed to neighbouring streets, contained within the proposed changes for the bus and cycleway plans.

CONSULTATION

The RMS publically exhibited the Review of Environmental Factors (REF) from 23 June to 25 July 2014. Notification of the REF included a letterbox drop to 36,000 properties, a dedicated website, a drop-in centre and visits and meetings with 200 stakeholders within the affected area.

Of the 36,000 letters distributed, the RMS received 60 submissions. Of these 17 supported the proposal, 31 opposed the proposal and 12 were neutral.

Submissions opposing the proposal were concerned about the loss of loading and parking spaces, increased noise and impact to business.

Submissions supporting the proposal believed the proposal would improve public transport access to the City and reduce general traffic congestion.

Included in the consultation process, meetings were held with individual stakeholders who raised concerns about the proposals. The proposal was amended based on these concerns to better meet the needs of the community within the allowable scope of the project objectives.

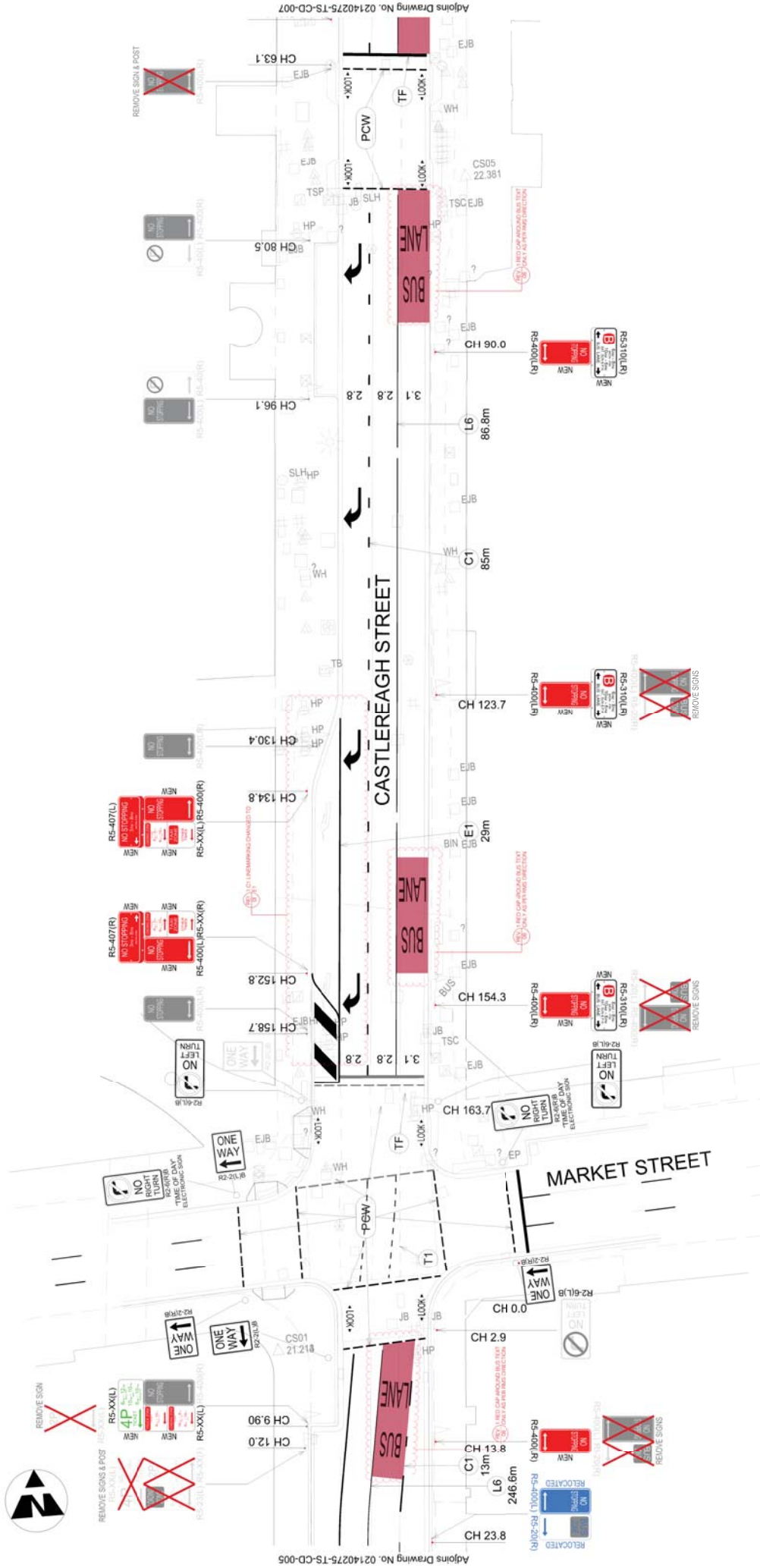
FINANCIAL

The SCCBP is being fully funded by the NSW State Government.

ATTACHMENTS

Item for Committee Information – Castlereagh Street between Liverpool and King Streets Sydney

Stephen Sherwin, Project Manager – Roads and Maritime Services



PLAN
SCALE 1:400 @ A3

Adjoints Drawing No. 02140275-TS-CD-005

Adjoints Drawing No. 02140275-TS-CD-007

Item	Description	Quantity	Unit
01	REMOVE SIGN	1	EA
02	REMOVE SIGN & POST	1	EA
03	REMOVE SIGN & POST	1	EA
04	REMOVE SIGN & POST	1	EA
05	REMOVE SIGN & POST	1	EA
06	REMOVE SIGN & POST	1	EA
07	REMOVE SIGN & POST	1	EA
08	REMOVE SIGN & POST	1	EA
09	REMOVE SIGN & POST	1	EA
10	REMOVE SIGN & POST	1	EA
11	REMOVE SIGN & POST	1	EA
12	REMOVE SIGN & POST	1	EA
13	REMOVE SIGN & POST	1	EA
14	REMOVE SIGN & POST	1	EA
15	REMOVE SIGN & POST	1	EA
16	REMOVE SIGN & POST	1	EA
17	REMOVE SIGN & POST	1	EA
18	REMOVE SIGN & POST	1	EA
19	REMOVE SIGN & POST	1	EA
20	REMOVE SIGN & POST	1	EA
21	REMOVE SIGN & POST	1	EA
22	REMOVE SIGN & POST	1	EA
23	REMOVE SIGN & POST	1	EA
24	REMOVE SIGN & POST	1	EA
25	REMOVE SIGN & POST	1	EA
26	REMOVE SIGN & POST	1	EA
27	REMOVE SIGN & POST	1	EA
28	REMOVE SIGN & POST	1	EA
29	REMOVE SIGN & POST	1	EA
30	REMOVE SIGN & POST	1	EA
31	REMOVE SIGN & POST	1	EA
32	REMOVE SIGN & POST	1	EA
33	REMOVE SIGN & POST	1	EA
34	REMOVE SIGN & POST	1	EA
35	REMOVE SIGN & POST	1	EA
36	REMOVE SIGN & POST	1	EA
37	REMOVE SIGN & POST	1	EA
38	REMOVE SIGN & POST	1	EA
39	REMOVE SIGN & POST	1	EA
40	REMOVE SIGN & POST	1	EA
41	REMOVE SIGN & POST	1	EA
42	REMOVE SIGN & POST	1	EA
43	REMOVE SIGN & POST	1	EA
44	REMOVE SIGN & POST	1	EA
45	REMOVE SIGN & POST	1	EA
46	REMOVE SIGN & POST	1	EA
47	REMOVE SIGN & POST	1	EA
48	REMOVE SIGN & POST	1	EA
49	REMOVE SIGN & POST	1	EA
50	REMOVE SIGN & POST	1	EA
51	REMOVE SIGN & POST	1	EA
52	REMOVE SIGN & POST	1	EA
53	REMOVE SIGN & POST	1	EA
54	REMOVE SIGN & POST	1	EA
55	REMOVE SIGN & POST	1	EA
56	REMOVE SIGN & POST	1	EA
57	REMOVE SIGN & POST	1	EA
58	REMOVE SIGN & POST	1	EA
59	REMOVE SIGN & POST	1	EA
60	REMOVE SIGN & POST	1	EA
61	REMOVE SIGN & POST	1	EA
62	REMOVE SIGN & POST	1	EA
63	REMOVE SIGN & POST	1	EA
64	REMOVE SIGN & POST	1	EA
65	REMOVE SIGN & POST	1	EA
66	REMOVE SIGN & POST	1	EA
67	REMOVE SIGN & POST	1	EA
68	REMOVE SIGN & POST	1	EA
69	REMOVE SIGN & POST	1	EA
70	REMOVE SIGN & POST	1	EA
71	REMOVE SIGN & POST	1	EA
72	REMOVE SIGN & POST	1	EA
73	REMOVE SIGN & POST	1	EA
74	REMOVE SIGN & POST	1	EA
75	REMOVE SIGN & POST	1	EA
76	REMOVE SIGN & POST	1	EA
77	REMOVE SIGN & POST	1	EA
78	REMOVE SIGN & POST	1	EA
79	REMOVE SIGN & POST	1	EA
80	REMOVE SIGN & POST	1	EA
81	REMOVE SIGN & POST	1	EA
82	REMOVE SIGN & POST	1	EA
83	REMOVE SIGN & POST	1	EA
84	REMOVE SIGN & POST	1	EA
85	REMOVE SIGN & POST	1	EA
86	REMOVE SIGN & POST	1	EA
87	REMOVE SIGN & POST	1	EA
88	REMOVE SIGN & POST	1	EA
89	REMOVE SIGN & POST	1	EA
90	REMOVE SIGN & POST	1	EA
91	REMOVE SIGN & POST	1	EA
92	REMOVE SIGN & POST	1	EA
93	REMOVE SIGN & POST	1	EA
94	REMOVE SIGN & POST	1	EA
95	REMOVE SIGN & POST	1	EA
96	REMOVE SIGN & POST	1	EA
97	REMOVE SIGN & POST	1	EA
98	REMOVE SIGN & POST	1	EA
99	REMOVE SIGN & POST	1	EA
100	REMOVE SIGN & POST	1	EA

Woolacotts.
CONSULTING ENGINEERS
Level 1, 1a Brongdon Road, Ashmore NSW 2464
Tel: +61 2 4442 2041 www.woolacotts.com.au
Fax: +61 2 4442 2042

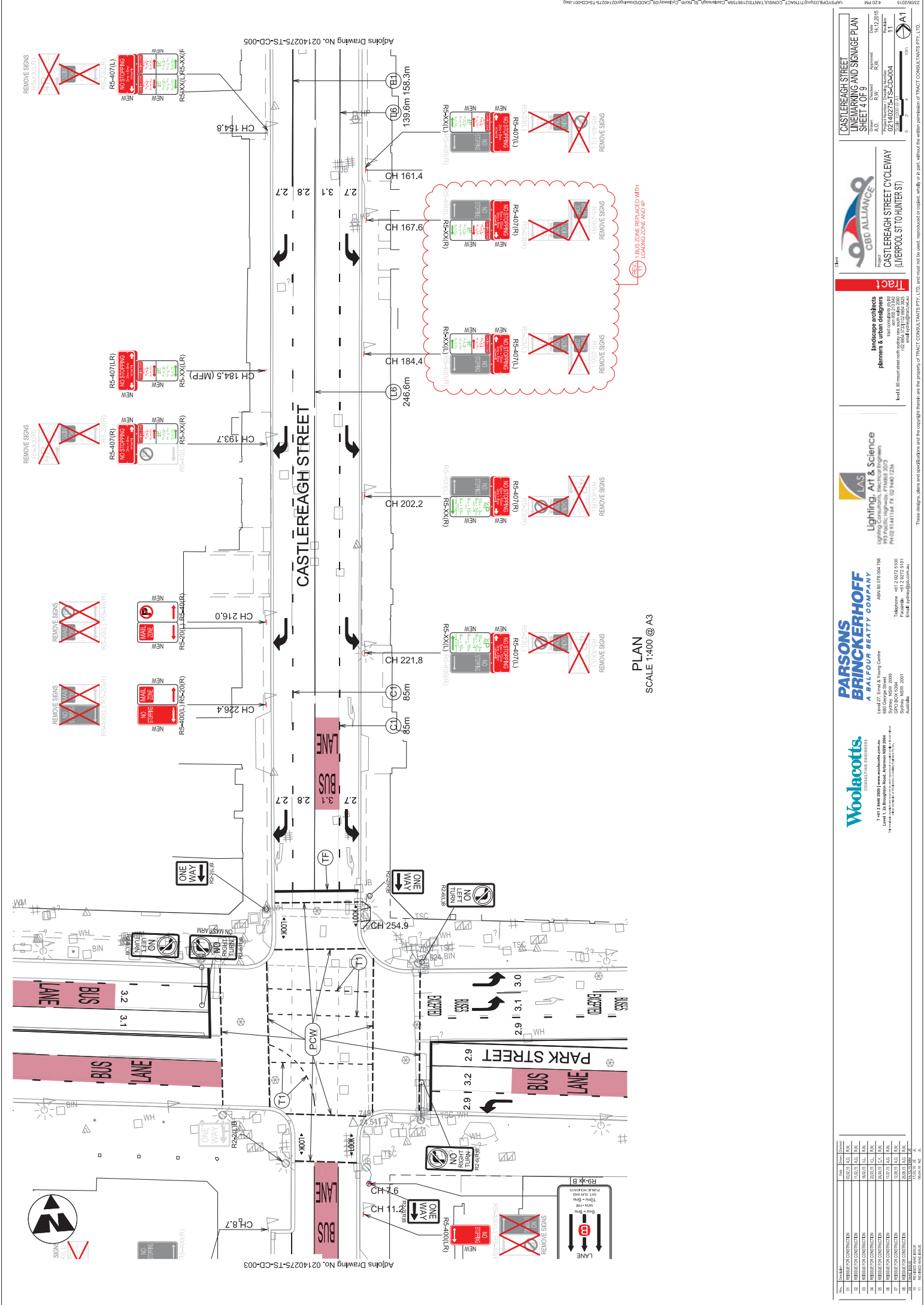
PARSONS BRINCKERHOFF
A BALFOUR BEATTY COMPANY
Level 27, Fines & Young Centre
880 George Street
Sydney NSW 2000
Australia
Telephone: +61 2 8972 5100
Facsimile: +61 2 8972 5101
Email: parsonsb@pb.com.au

Lighting, AT & Science
LIGHTING CONSULTANTS
Level 10, 100 Macquarie Street
Sydney NSW 2000
Australia
Telephone: +61 2 9222 5100
Facsimile: +61 2 9222 5101
Email: info@lighting.com.au

Tract
landscape architects
planners & urban designers
Level 10, 100 Macquarie Street
Sydney NSW 2000
Australia
Telephone: +61 2 9222 5100
Facsimile: +61 2 9222 5101
Email: info@tract.com.au

Project
CASTLEREAGH STREET CYCLEWAY
(LIVERPOOL ST TO HUNTERS ST)

CASTLEREAGH STREET
LINE MARKING AND SIGNAGE PLAN
SHEET 6 OF 9
Project Number: 2546
Drawing Number: TS-CD-006
Date: 14.12.2015
Scale: 1:400 @ A3



PLAN
SCALE 1:400 @ A3

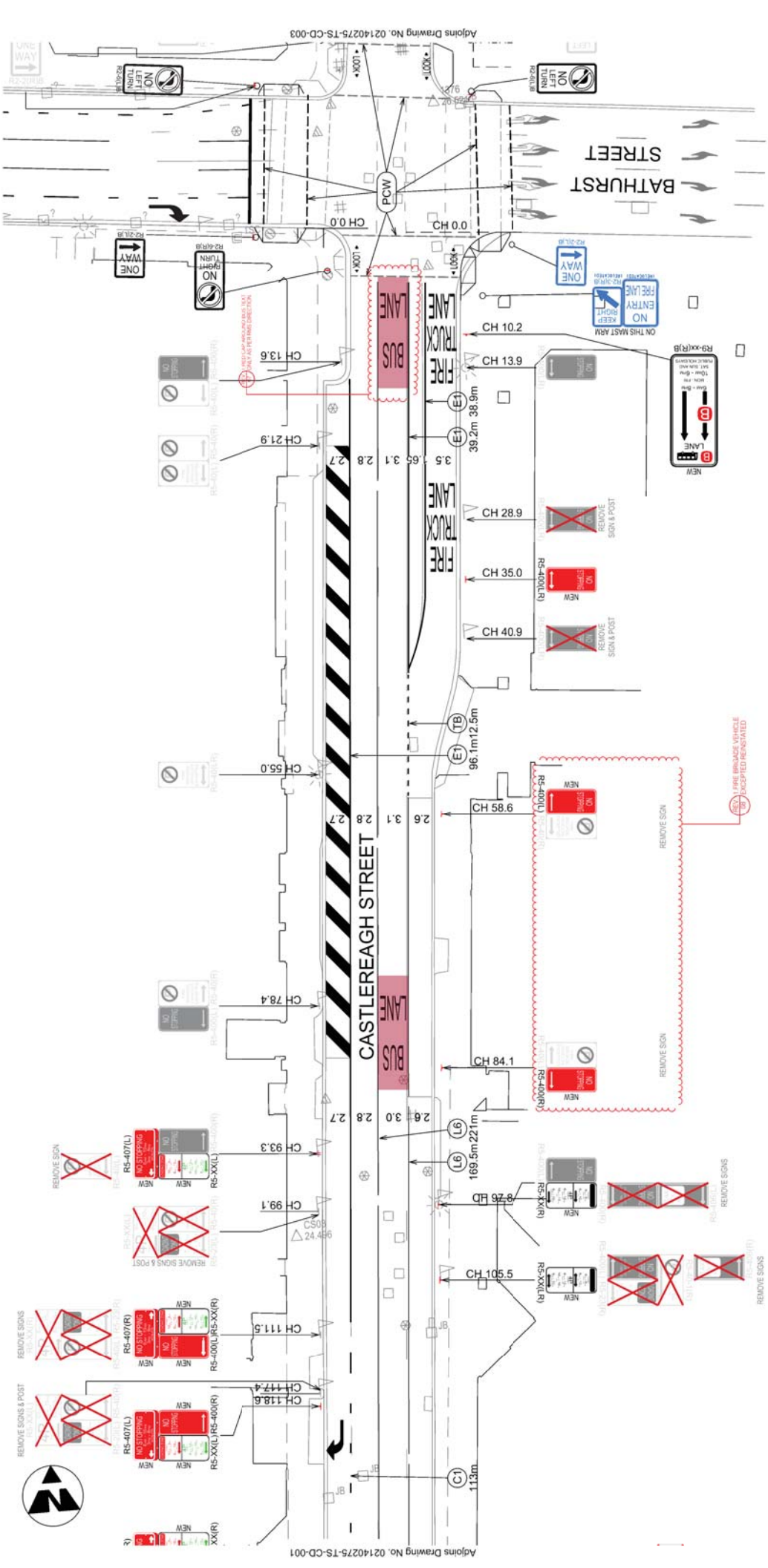
Adjoints Drawing No. 02140275-TS-CD-005

Adjoints Drawing No. 02140275-TS-CD-003

<p>Woolacotts CONSULTING ENGINEERS Level 1, 24 Broughton Road, Artarmon NSW 1588 T +61 2 9448 2300 www.woolacotts.com.au +61 2 9448 2300</p>	<p>PARSONS BRINCKERHOFF A BALFOUR BEATTY COMPANY Level 27, Ems & Young Centre 880 George Street Sydney NSW 2001 Telephone +61 2 9292 5100 Fax +61 2 9292 5101 Email parsonsb@parsonsb.com</p>	<p>Lighting, Art & Science LIGHTING CONSULTANTS 979 Pacific Highway, PYRMONT NSW 2009 PH 02 91441144 FX 02 9440 1236</p>	<p>Tract Landscape architects planners & transport engineers Level 10, 80 Macquarie Street Sydney NSW 2000 Phone 02 9251 1300 Fax 02 9251 1305 Email info@tract.com.au</p>	<p>cbd ALLIANCE Project CASTLEREAGH STREET CYCLEWAY (LIVERPOOL ST TO HUNTER ST)</p>	<p>CASTLEREAGH STREET LINEWORKING AND SIGNAGE PLAN SHEET 4 OF 9 A3 R.W. 14.12.2015 Date 14.12.2015 1:1 Scale PROJECT NO. 02140275-TS-CD-004 SHEET NO. 004 OF 009 A1</p>
---	--	---	---	--	--

Rev	Issue	Date
01	ISSUED FOR CONSTRUCTION	14/12/15
02	ISSUED FOR CONSTRUCTION	14/12/15
03	ISSUED FOR CONSTRUCTION	14/12/15
04	ISSUED FOR CONSTRUCTION	14/12/15
05	ISSUED FOR CONSTRUCTION	14/12/15
06	ISSUED FOR CONSTRUCTION	14/12/15
07	ISSUED FOR CONSTRUCTION	14/12/15
08	ISSUED FOR CONSTRUCTION	14/12/15
09	ISSUED FOR CONSTRUCTION	14/12/15
10	ISSUED FOR CONSTRUCTION	14/12/15
11	ISSUED FOR CONSTRUCTION	14/12/15

These designs, plans and specifications and the copyright therein are the property of TRACT CONSULTANTS PTY, LTD. and must not be used, reproduced or copied, wholly or in part, without the written permission of TRACT CONSULTANTS PTY, LTD.



PLAN
SCALE 1:400 @ A3

Adjoins Drawing No. 02140275-TS-CD-001

Adjoins Drawing No. 02140275-TS-CD-003

NO.	REVISION	DATE	BY	CHECKED
01	ISSUE FOR CONSTRUCTION	21.11.14	A.S.	B.R.
02	ISSUE FOR CONSTRUCTION	28.11.14	A.S.	B.R.
03	ISSUE FOR CONSTRUCTION	10.12.14	A.S.	B.R.
04	ISSUE FOR CONSTRUCTION	10.12.14	A.S.	B.R.
05	ISSUE FOR CONSTRUCTION	14.12.14	A.S.	B.R.
06	ISSUE FOR CONSTRUCTION	14.12.14	A.S.	B.R.
07	ISSUE FOR CONSTRUCTION	14.12.14	A.S.	B.R.

Woolcotts.
CONSULTING ENGINEERS
Level 1, 28 Brongersma Road, Ashmore NSW 2121
Tel: 02 9448 2383 | www.woolcotts.com.au

PARSONS BRINCKERHOFF
A BALDUR BEATTY COMPANY
Level 27, Bond & Young Centre
885 George Street
Sydney NSW 2000
Telephone: +61 2 9272 5100
Facsimile: +61 2 9272 5101
Email: parsons@parsons.com

Lighting, Art & Science
157-159 Victoria Road, Pyrmont NSW 2150
Phone: +61 2 9550 7200
Fax: +61 2 9550 7224
Email: info@las.com.au

Tract
landscape architects
planners & designers
157-159 Victoria Road, Pyrmont NSW 2150
Phone: +61 2 9550 7200
Fax: +61 2 9550 7224
Email: info@tract.com.au

CBD ALLIANCE
Project: CASTLEREAGH STREET CYCLEWAY
(LIVERPOOL ST TO HUNTER ST)

CASTLEREAGH STREET
LINE MARKING AND SIGNAGE PLAN
SHEET 7 OF 9
Project: CASTLEREAGH STREET CYCLEWAY
A.O.C. R.W. R.L. R.O.
Date: 14.12.2013
Scale: 1:400 @ A3

These designs, plans and specifications and the copyright therein are the property of TRACT CONSULTANTS PTY LTD and must not be used, reproduced or copied, wholly or in part, without the written permission of TRACT CONSULTANTS PTY LTD.

